



Head office address: 241 Bradwick Drive, Concord, Ontario, Canada L4K 1K5

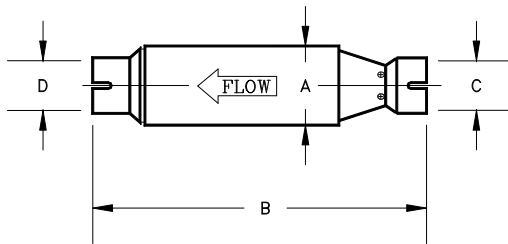
Mailing address: P.O. Box 90, Concord, Ontario, Canada L4K 1B2

Tel: (905) 660-6450 Toll free: 1-800-872-1968 Fax: (905) 660-6435 E-mail: info@dcl-inc.com Website: www.dcl-inc.com

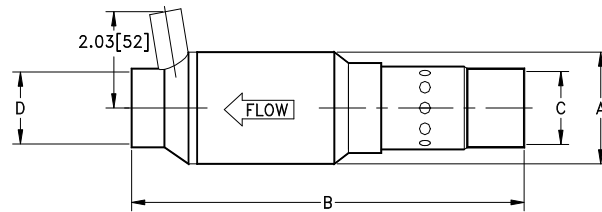
MINE-X® SV PURIFIER DIMENSIONS

	DC2	DC3	DC4	DC5	DC6
Max Engine Power hp (kW)*	9 (7)	16 (12)	32 (24)	53 (40)	84 (63)
Max Exhaust Gas Flow cfm (m ³ /h)*	54 (92)	96 (160)	192 (325)	318 (540)	504 (850)
A – diameter in (mm)	1.65 (42)	2.43 (62)	3.12 (79)	4.00 (102)	5.00 (127)
B – length in (mm)	6.75 (171)	9.00 (229)	11.77 (300)	13.75 (350)	15.02 (381.5)
C – inlet diameter in (mm)	CUSTOMER SPECIFIED DCL TO CONFIRM				
D – outlet diameter in (mm)					

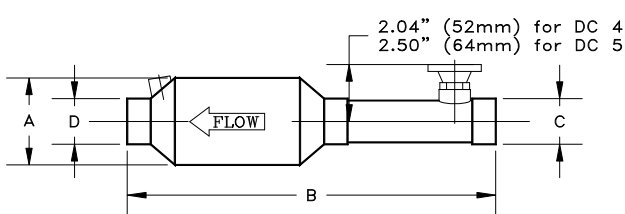
**All sizes are based on a four-stroke cycle, spark ignited engine with an exhaust temperature of 450°C. This chart is for reference use only. Please contact DCL for final purifier size determination.



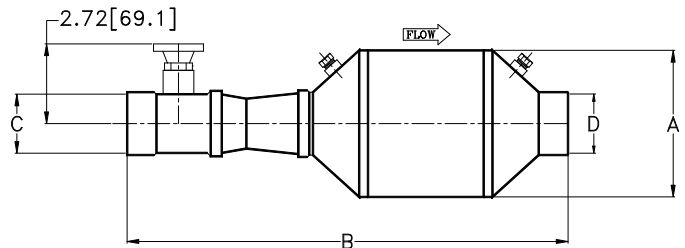
MINE-X® SV Purifier
DC2



MINE-X® SV Purifier
DC3



MINE-X® SV Purifier
DC4 & DC5



MINE-X® SV Purifier
DC6

DCL's policy is that of continuous product improvement.
DCL reserves the right to change any information without notice.